

WHITEPAPER

# A Comprehensive Overview of Microsoft System Backup and FluentPro Backup for Dataverse



VISIT OUR WEBSITE  
[FLUENTPROBACKUP.COM](https://www.fluentprobackup.com)

Are you an IT manager responsible for safeguarding your organization's mission-critical data on Microsoft Dataverse? If so, you want to ensure you can quickly and seamlessly back up and restore crucial data without experiencing any challenges. Keep reading to learn about the best backup and restore options.

## Why Microsoft Dataverse Backup and Restore is Important

Dataverse helps IT managers store and manage mission-critical data used across business applications. Dataverse stores your data in each set of standard tables and columns. Users can create custom tables to meet their organization's needs through various apps. The process of storing and managing metadata and data is accessible. The platform features cloud-based storage capability and role-based security access control, giving access only to specific users.

As your company increasingly depends on Microsoft Dataverse to store essential data, setting up a dedicated backup and restore solution becomes paramount. Two notable solutions are Microsoft System Backup and FluentPro Backup for Dataverse. But how do these two solutions compare?

## Microsoft System Backup: The Basic

Microsoft offers a dependable native solution to back up and restore Dataverse environments.

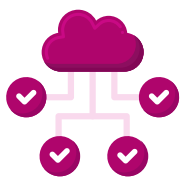
When you have a Dynamic 365 app, the MS Systems Backup, by default, backs up your project environment from the first day you start working on it. The backup is performed continuously, and all backup copies are stored for 28 days. If any issues arise during this time, you can have your backup environment restored.

If you're not working with any Dynamic 365 app, the Microsoft System Backup will still back up your environment by default, but you can only access the backup copies within 7 days. However, you can extend the retention period from 7 days to 14, 21, or even 28 days, provided you're a Global admin, Power Platform admin, or Dynamic 365 admin recognized in Azure Active Directory (Azure AD). However, this feature only works for future backups and does not apply to managed environments already backed up for 7 days. The Microsoft systems back up all your environments, except trial environments, and you are not limited to any backup capacity.

You can restore a system backup manually by navigating to the Microsoft Power Platform admin center and signing in as an admin. Navigate to “Environment,” then click the system icon and choose a backup to restore by selecting the date and time you choose. The system also gives you the option to back up your data manually. Backed-up environments are restored only to the exact region in which they were previously backed up.

With Microsoft System Backup, you can expect:

### **Infrastructural integration**



The default system backup is seamlessly connected to your Microsoft Dataverse infrastructure. Such integration provides a cohesive experience for teams or users familiar with the MS ecosystem.

### **Centralized management**



The system backup allows you to manage backups centrally and even change the retention periods of your backups. This makes management much more accessible for IT professionals overseeing numerous Dataverse environments.

### **Standardized approach**



Because it is a native MS solution, all system backups comply with strict, standardized practices and protocols, thus promoting consistency and compatibility across the Microsoft Dataverse platform.

# FluentPro Backup for Dataverse Review

This is a solution designed to address the specific data backup and restore preferences of Microsoft Dataverse users. The capabilities and features of [FluentPro Backup for Dataverse](#) include:

## Continuous Backup



FluentPro Backup for Dataverse offers automated backup that allows you to create regular backups at a specific frequency. You can set up the frequency when the system looks for changes, and it will back up data automatically and continuously. Thanks to this functionality, you reduce the risk of losing data while making changes across your project environment.

## Granular Restore



Robust backup and granular restore are some of the unique options that FluentPro Backup for Dataverse offers its users. This allows you to selectively pick which entities and components to back up or restore. Such a level of granularity creates flexible and efficient data recovery management processes.

## Automated and Secured Environment Backup



FluentPro Backup for Dataverse runs on the cloud-based Microsoft Azure, meaning all data and metadata in your environment are safe and readily available for restore.

Check out the table below for a detailed comparison of the functionalities of these two solutions.

# Comparison of Microsoft System Backups and FluentPro Backup for Dataverse

FLUENTPRO		MICROSOFT
<b>B A C K U P</b>		
What is backed up?	Tables of a Dataverse instance	The whole Power Platform environment
Type of Backups	Incremental	Full
Backup Frequency	Every 4, 8, 12 hours	Continuous backups
Backed up Types of environments	With FluentPro Backup you can protect a Dataverse database from any type of Power Platform environment.	Trial environments (standard and subscription-based), are not backed up. Therefore if you decide to convert a Trial environment to a Production one, you will not have backups from its Trial period.
Backups Retention Period	<p>FluentPro Backup creates backups of the Tables versions hourly/daily, and you can decide how many of these versions you need to save, the rest can be deleted automatically according to the Retention Policy settings.</p> <p>No need for manual interaction - our Retention Policy keeps as many Tables versions as you wish per certain period of time.</p> <p>The Retention Policy settings are built with the concept of letting users keep the maximum number of most recent tables versions, and also making sure there is at least 1 version of the table kept for each month for the past year or more. Retention Policy also helps to optimize the backup storage utilization.</p>	<p>The system backups of Production environments with Dynamics 365 applications enabled are stored for up to 28 days.</p> <p>For Production environments that don't have Dynamics 365 applications enabled, the default backup retention period is 7 days only. This period is changeable with PowerShell script to 14, 21, and 28 days, but only for Managed Environments.</p> <p>The change might take up to 24 hours to go into effect on the existing backups, some backups might be deleted sooner than expected. For all other non-production environments, the default backup retention period of 7 days is used and is not changeable.</p>
<b>R E S T O R E</b>		
The speed and principle of Restore	<p>FluentPro Backup offers granular restore. It's possible to restore a table or even a single record of a table.</p> <p>To speed up the process you may use 'Export to Excel' option to get a list of a table records, and just manually update the incorrect record with the original one.</p> <p>Also, you may share this document with your colleague if needed.</p>	<p>With MS Backup Solution only the whole Power Platform environment with Dataverse database restore is available. There is no possibility to restore a single table or table record. Additionally, only Sandbox environments can be used as a location for restore.</p> <p>Depending on the size of data, restore operations may take more than 24 hours. So just to get a single table or a bunch of records recovered, you will need to perform the restore of your full Power Platform environment to a Sandbox environment, wait for an extensive amount of time until it completes and then manually copy the required data to your Production environment.</p> <p>At the same time, it's still possible to restore to your Production Power Platform environment. To do it you will need to convert your Production environment into a Sandbox that will automatically delete all its backups older than 7 days. Moreover, restoring in a such way you will lose all data created after the date the backup in question was performed.</p>
<b>S U M M A R Y</b>		
	<p>FluentPro Backup is a perfect Solution for safety from human errors or data corruption when each minute counts. It's easy to use, and provides visibility over backup and restore processing.</p> <p>FluentPro prides over the flexibility and manageability of the Retention Policy.</p>	<p>Backup and Restore Solution provided by Microsoft is great when you want to protect the whole Power Platform environment.</p> <p>However, extensive amount of time is required to recover a single table. It has certain limitations in terms of backup and restore when taking into consideration the different environment types.</p>

# FluentPro Backup for Dataverse Benefits

FluentPro Backup for Dataverse distinguishes itself by boasting several key advantages and benefits for businesses:



The automated functionality guarantees that Dataverse backup is performed without manual intervention.



Reduction of data loss and other damage associated with human errors.



Reliable data protection for your Dataverse environment.



Granular restore performed automatically.

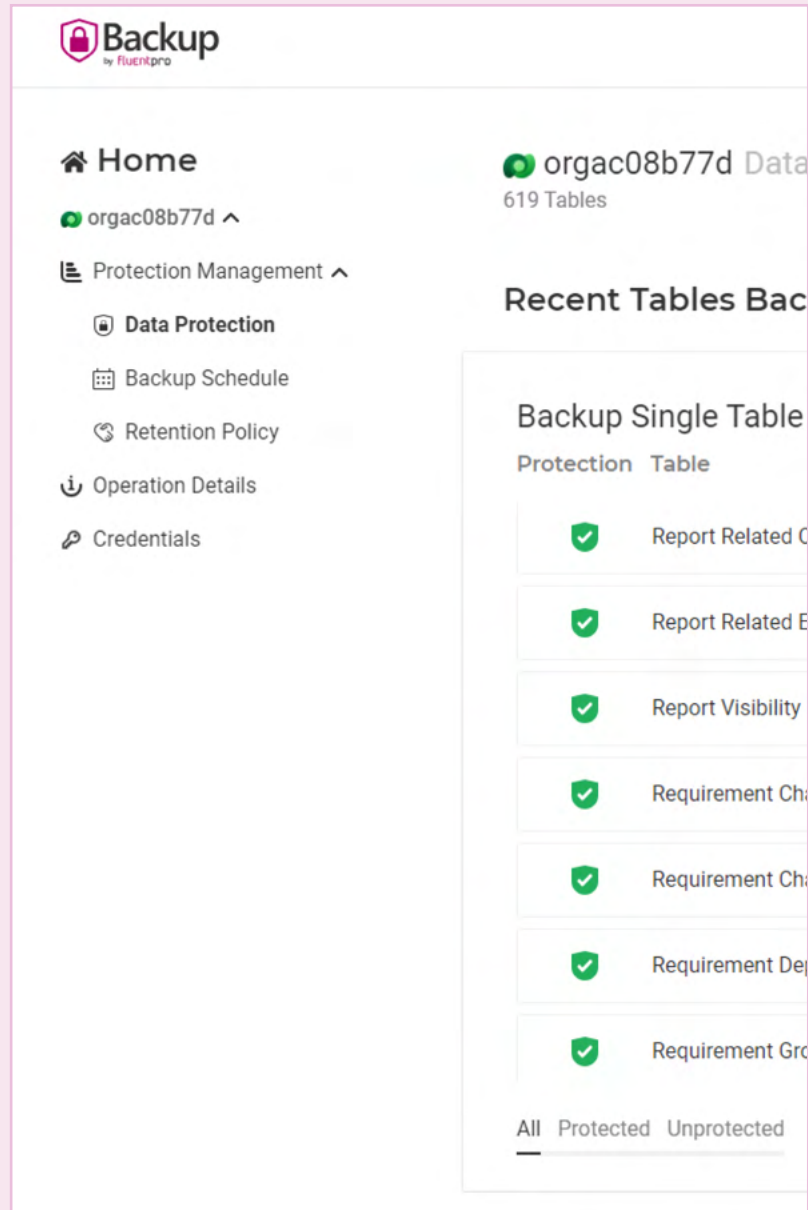


Elimination of possible oversights and ensure continuous data protection.

# fluentpro

## Sign up to see how FluentPro Backup works

Sign up



sales@fluentpro.com

+1 (855) 358 3688

